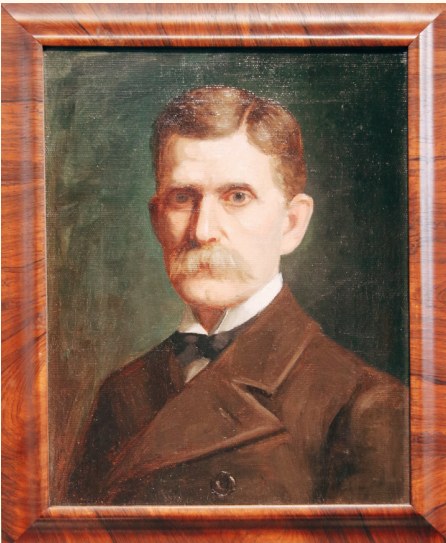


MARCH 2021

WHAT HAS THE LEPRECHAUN TOUCHED?

GEORGETOWN & SCOTT COUNTY MUSEUM



Will T. Hunleigh

IT LOOKS LIKE THE LEPRECHAUN HAS TOUCHED THE BACKGROUND OF THIS PORTRAIT!

William T. Hunleigh was one of Kentucky's most exceptional artists. His paintings have graced the wall of prominent homes, state courthouses, and art galleries for more than 100 years. Hunleigh, along with his friend and fellow artist Paul Sawyer, helped define Kentucky art during the era of American Impressionism.

Surrey Cart

THE LEPRECHAUN MUST HAVE TOUCHED THE SEATS OF THIS CART!

In 1889, the Surry Cart was built. The dashboard, fenders, and seat backs were all patent leather, and the lamps are kerosene. It was owned by Bonnie Neuville and driven by her husband, Fred Neuville, in many horse shows. It once carried Rick Pitino and his family in the Festival of the Horse parade. It also carried the bride and groom in a wedding at Ward Hall. Interestingly enough, this surrey was pulled by a Morgan Horse, named Royal, in the movie "Black Beauty"!

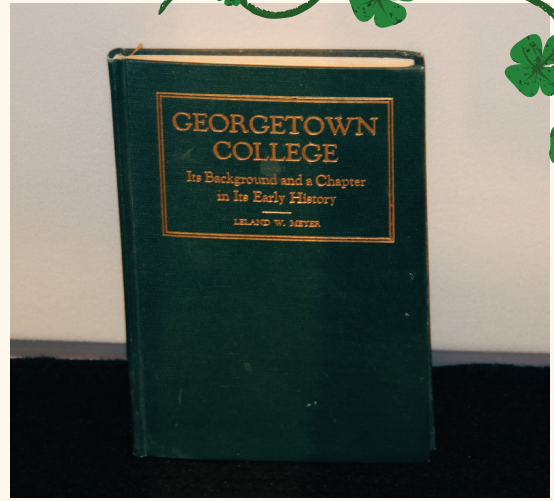




WWII Helmet

THE LEPRECHAUN SHOWED US THIS GREEN HELMET!

This was a World War II Helmet used by Elmer Thomas Vance and was donated by E. T. Vance II.



Georgetown College Book

THE LEPRECHAUN WANTS YOU TAKE A LOOK AT THIS GREEN BOOK!

This book discusses the background and early history of Georgetown College!



Closing Statement

We hope you have a great St. Patrick's Day!

229 East Main Street
Georgetown, KY 40324

(502) 863-6201
museum.scottco@yahoo.com
Hours: Closed until further notice.

Check us out on social media!
Facebook: @gtownscottcountymuseum
Instagram: @gscmuseum
Website: georgetownscottcountymuseum.com

Railway Bulletin

THE LEPRECHAUN MUST HAVE MADE THIS GREEN!

This bulletin shows the schedule for the trains traveling to and from Cincinnati, Atlanta, and Charleston!